

AN INNOVATION BY DAIMLER HOMES

# THE HIGHBURY

EAST LEGON - ADJIRINGANOR

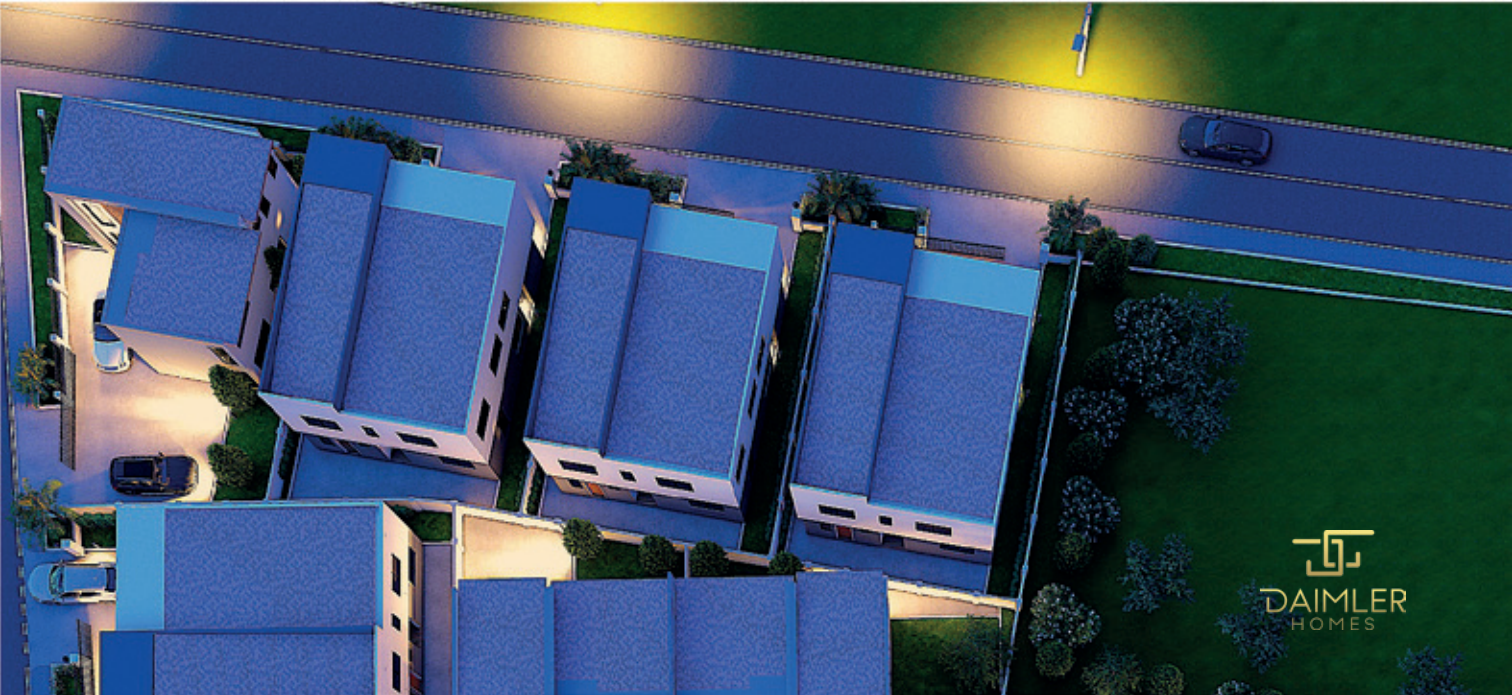
[www.daimlerhomesgh.com](http://www.daimlerhomesgh.com)





## HALLMARK OF MODERN LIVING

Step Out to Discover a Whole New World  
with The Highbury.





The image is an aerial night view of a modern residential complex. The scene is illuminated with warm, golden light from streetlights and building lights, contrasting with the deep blue of the twilight sky. In the center, a rectangular swimming pool is brightly lit, with a person visible in the water. Surrounding the pool are several modern, multi-story buildings with flat roofs and large windows. The buildings are arranged in a grid-like pattern, with some featuring balconies. A paved road runs through the complex, with several cars parked or driving. In the bottom right corner, there is a logo for 'DAIMLER HOMES' consisting of a stylized 'D' and 'H' symbol above the text 'DAIMLER HOMES'.

## HALLMARK OF MODERN LIVING

The face of pure commitment on every level,  
a more reliable companion for all seasons.

  
DAIMLER  
HOMES

CONTENT

- Hallmark of Modern Living
- Exteriors & Interiors
- Floor Plan Highlights
- Financial Highlights
- About Daimler Homes





# THE HIGHBURY

## HALLMARK OF MODERN LIVING

THE HIGHBURY is poised to become the hallmark of modern living in East Legon - Adjiringanor one of Accra's most sought neighbourhoods. This thoughtfully designed mixed-use development which combines an apartment complex with fully detached townhomes in a gated community, offering a variety of living options to suit diverse lifestyles.

Located in the heart of East Legon - Adjiringanor, THE HIGHBURY offers residents unparalleled convenience. Top-tier hospitals, supermarkets, restaurants all within a 5-minute radius, making everyday life seamless and ensuring access to premium services.

THE HIGHBURY'S design reflects a deep understanding of contemporary lifestyles. Whether it's the camaraderie of the gated community or the privacy of the fully detached homes, THE HIGHBURY offers a living experience tailored with precision and elegance, ensuring a seamless blend of style and comfort.

# HALLMARK OF MODERN LIVING

The Highbury's design reflects a deep understanding of contemporary living.

# HALLMARK OF MODERN LIVING

Offers a variety of living options to suit diverse lifestyles.

  
DAIMLER  
HOMES





## HALLMARK OF MODERN LIVING

This prime location strikes a perfect balance between accessibility and exclusivity.

  
DAIMLER  
HOMES

## HALLMARK OF MODERN LIVING

The Highbury is more than a place to live, it's a lifestyle designed for those who value great community, convenience, and choice.



  
DAIMLER  
HOMES

HALLMARK OF MODERN LIVING



  
DAIMLER  
HOMES

HALLMARK OF MODERN LIVING



## HALLMARK OF MODERN LIVING

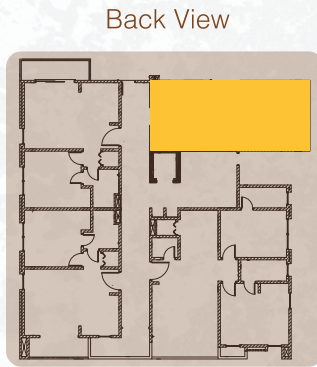
East Legon - Adjiringanor continues to grow as one of Ghana's prime real estate hubs, making THE HIGHBURY not just a residence but a strategic investment opportunity. It's diverse living options and prime location promise enduring value for homeowners and investors alike.



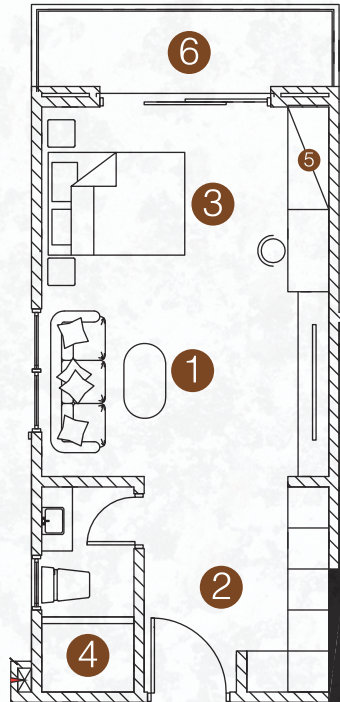
# FLOOR PLAN HIGHLIGHTS

## STUDIO APTS.

### FIRST - FIFTH FLOORS



Front View

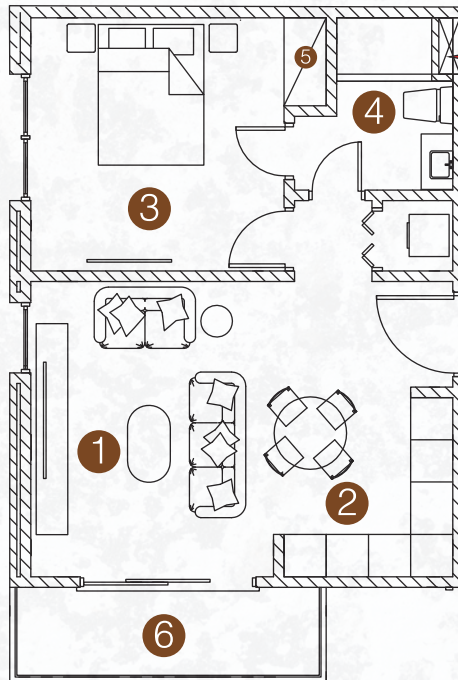
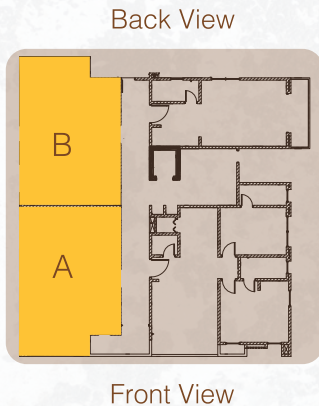


1. LIVING AREA
2. KITCHEN & DINING
3. BEDROOM AREA
4. WASHROOM
5. CLOSET
6. TERRACE

**GROSS AREA - 40SQM**

# FLOOR PLAN HIGHLIGHTS

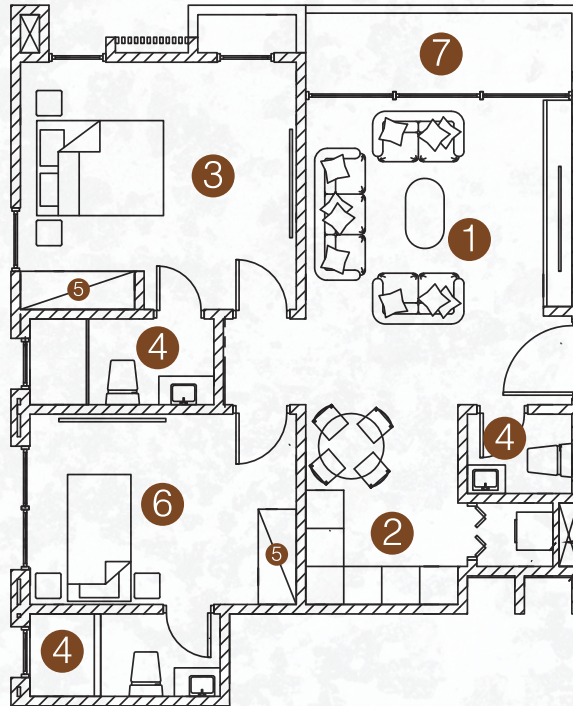
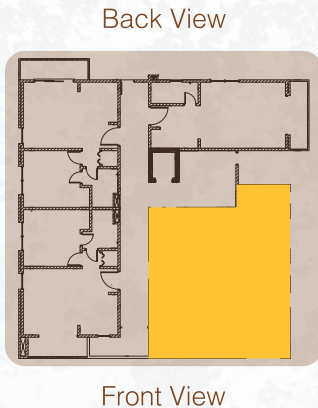
## ONE BEDROOM APTS. FIRST - FIFTH FLOORS



1. LIVING AREA
  2. KITCHEN & DINING
  3. BEDROOM AREA
  4. WASHROOM
  5. CLOSET
  6. TERRACE
- GROSS AREA - 50SQM**

## FLOOR PLAN HIGHLIGHTS

TWO BEDROOM APTS.  
FIRST - FIFTH FLOORS



1. LIVING AREA
2. KITCHEN & DINING
3. MASTER BEDROOM
4. WASHROOM
5. CLOSET
6. BEDROOM 1
7. TERRACE

**GROSS AREA - 80SQM**

# FLOOR PLAN HIGHLIGHTS

## THREE BEDROOM SEMI-DETACHED TOWNHOUSE



### Ground floor

1. LIVING AREA
2. KITCHEN & DINING
3. MASTER BEDROOM
4. WASHROOMS (5)

**GROSS AREA - 155SQM**

### First floor

5. BEDROOM 1
6. BEDROOM 2
7. FAMILY AREA
8. CLOSET
9. STORAGE

# FLOOR PLAN HIGHLIGHTS

## THREE BEDROOM DETACHED TOWNHOUSE



### Ground floor

1. LIVING AREA
2. KITCHEN & DINING
3. BOY'S QUARTERS
4. WASHROOMS (5)

**GROSS AREA - 190SQM**



### First floor

5. MASTER BEDROOM
6. BEDROOM 1
7. BEDROOM 2
8. CLOSET
9. FAMILY AREA

# BUILDING HIGHLIGHTS

## STANDARD FINISHING

### INTERNAL FINISH

- a. Plaster board ceilings
- b. Emulsion finish walls
- c. Porcelain floor & wall tiles
- d. Internal doors with fittings
- e. En-suite bathrooms; European standard WC, Vanity, Water heater, Mirror & Washroom accessories.
- f. Air-conditioning units
- g. Recessed spotlights
- h. Fitted wardrobes
- i. Glazed aluminium windows

### ELECTRICAL & CONNECTIVITY

- a. Installed TV points in the living area and all bedrooms
- b. Cable & Internet connectivity
- c. Contemporary switch plates and sockets.
- d. CCTV entrance to building
- e. Automated gate entry
- f. Smoke detectors in all apts and communal areas.

### MODULAR KITCHEN

- a. Gloss/matte finish to all units
- b. Integrated larder fridge / freezer
- c. Tiled backsplash
- d. Stainless steel kitchen sink
- e. Hob, Extractor, Oven (Where- applicable) & Microwave.

### EXTERNAL FINISH

- a. 24hr Security & Security Cameras
- b. Swimming Pool & Lounge
- c. Concierge & Facility Management
- d. Backup Water & Generator
- e. Elevators & Gym
- f. Landscaping & Paved Car Park

# FINANCIAL HIGHLIGHTS

## PRICES & PAYMENT PLANS



	STUDIO Apt.	1 BED Apt.	2 BED Apt.	3 BED Townhse. (semi-detached)	3 BED Townhse. (detached)
PURCHASE PRICE	\$75K	\$99K	\$169K	\$220K	\$265K
SIZE (SQM)	40sqm	50sqm	80sqm	185sqm	225sqm
GROSS MONTHLY SHORT TERM RENTAL INCOME	\$975	\$1,125	\$1,800	\$2,700	\$3,000
GROSS MONTHLY LONG TERM RENTAL INCOME	\$850	\$1,100	\$1,600	\$2,100	\$2,400
GROSS ANNUAL SHORT TERM RENTAL INCOME	\$11,700	\$13,500	\$21,600	\$32,400	\$36,000
GROSS ANNUAL LONG TERM RENTAL INCOME	\$10,200	\$13,200	\$19,200	\$25,200	\$28,800
ANNUAL YIELD (%)	10.9%	10.7%	9.7%	9.7%	9.2%



## FINANCIAL HIGHLIGHTS

### MAKING LUXURY LIVING ATTAINABLE

We believe that owning your dream home should be a seamless and fulfilling journey. Recognizing that each client has unique financial needs, we've crafted flexible payment solutions designed to make luxury living more accessible than ever before.

### TAILORED FINANCIAL SOLUTIONS

Our payment plans begin with a reservation fee of \$5,000, applicable across all properties. Buyers are required to make a minimum initial deposit of 20% of the offer value, with the remaining payment terms negotiated to align with individual preferences and financial plans. This flexibility ensures that every client feels empowered in their journey toward ownership.

### UP TO 3-YEAR PAYMENT PLANS ON OFF-PLAN PROPERTIES

For off-plan projects like Keelson Court, Casa-Viva, and The Highbury, we offer extended payment plans of up to 3-Years. This allows you to secure your desired property at today's prices while enjoying the flexibility of spreading payments over an extended period. It's an opportunity to invest in luxury without the immediate financial burden.



# DAIMLER HOMES LTD



## A CONCEPT OF TIMELESS EXCELLENCE

The name Daimler is steeped in history, evoking ideas of precision, craftsmanship, and innovation. Originally associated with world-class engineering and visionary designs, the concept of Daimler transcends industries, representing the pursuit of excellence and enduring quality.

To us, Daimler is not just a name, it's a philosophy.

It signifies a commitment to creating something extraordinary, where every detail is intentional, every choice purposeful, and every outcome remarkable.

Daimler Homes takes the timeless excellence of the Daimler concept and brings it to life through high-end real estate developments.

We are not just builders; we are visionaries, crafting exceptional spaces that blend innovation, elegance, and purpose.

As a forward-thinking company, Daimler Homes is committed to creating properties that resonate with the aspirations of discerning homeowners.

Our projects are thoughtfully designed to enhance lifestyles, offering modern architecture, premium locations, and unparalleled amenities.



For more details about our new products and services,  
kindly contact us via the details below;

Head Office,  
No. 3 Bamboo St, East Legon, Accra - Ghana  
+233 (0) 200 440 730  
[sales@daimlerhomesgh.com](mailto:sales@daimlerhomesgh.com)  
[www.daimlerhomesgh.com](http://www.daimlerhomesgh.com)