



# VYX COURT

Townhouse Community  
Burma Hills, East Airport





## THE GOLD STANDARD

When Diamler introduces a  
new Home, it really is a new  
Home.



DAMLER  
HOMES

---

---

# CONTENT

About Vyx Court

The Gold Standard

Floor Plan Highlights

Financial Highlights

About Daimler Homes



# VYX COURT

This intimate and peaceful development offers,  
The Gold Standard experience at its finest, and provides  
the best of uncluttered space to enjoy with your family and friends.

Specifically built for aspiration individuals with the ultimate financial success story.  
Relax and enjoy the beautiful cityscape and experience an endless stream of prestige.  
Vyx Court is a rare opportunity in a perfect setting that combines the perfect balance  
between security and investment with a truly authentic unruffled atmosphere.

Buckle up for pure adrenaline at first sight,  
Imagine all the goals you can achieve living in an aspirational community,

Located at Burma Hills, East Airport,  
Vyx Court is another innovation by Daimler Homes Limited.





## THE GOLD STANDARD

If this home doesn't excite you,  
check your pulse immediately!

  
DAIMLER  
HOMES



## THE GOLD STANDARD

Always heading in the right direction.

Functionality and passion go a long way with Daimler's - Vyx Court.

THE GOLD  
STANDARD





  
DAIMLER  
HOMES

THE GOLD  
STANDARD



## THE GOLD STANDARD

The face of sure commitment on any surface, a more reliable companion for all seasons.

## THE GOLD STANDARD

Chic, comfortable and functionally ready. This home offers you the thrill of Daimler's prestige and pleasant premium experience.

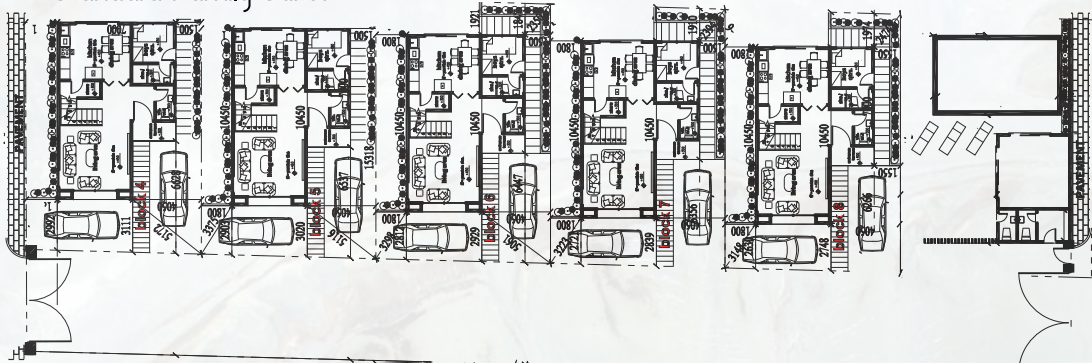


## THE GOLD STANDARD

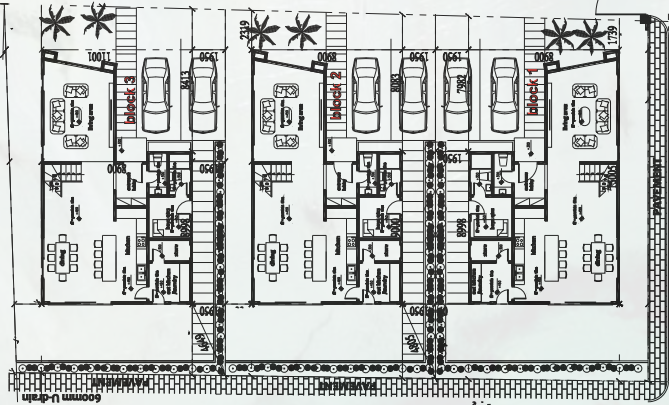
All eyes on Daimler's -  
Vyx Court, designed  
for Royals.



## Standard Family Suites



## COMMUNITY HIGHLIGHTS



## Grand Family Suites

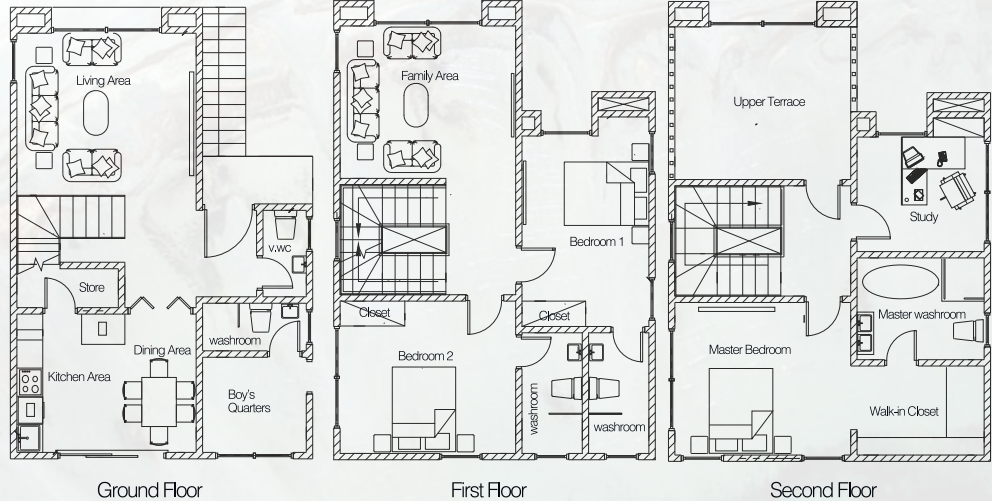
# FLOOR PLAN HIGHLIGHTS

## 3 BEDROOMS + BQ

SELLING

### Standard Family Suites

Space(s)	Area(s)
Living Area	28sqm
Kitchen & Dining Area	20sqm
Kitchen Store	4sqm
Washrooms(5)	32sqm
Master Bedroom	20sqm
Family Area	22sqm
Other Bedrooms(2)	35sqm
Balcony	22sqm
Closet	10sqm
Study	10sqm
Boys Quarters	7sqm
Gross Area	240qm



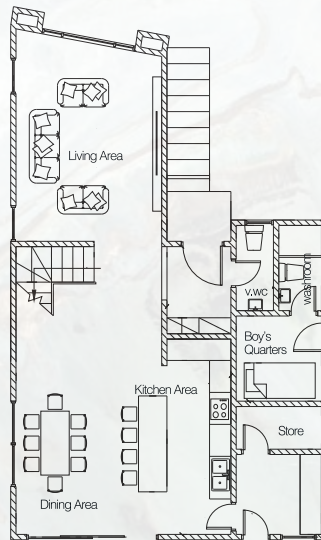
# FLOOR PLAN HIGHLIGHTS

## 4 BEDROOMS + BQ

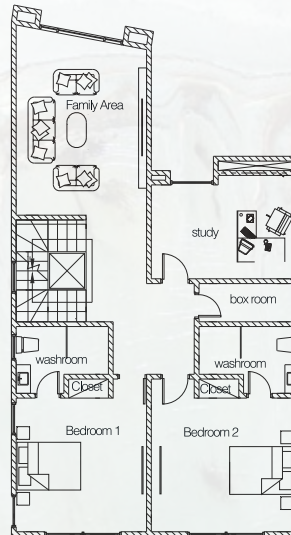
**SOLD OUT**

### Grand Family Suites

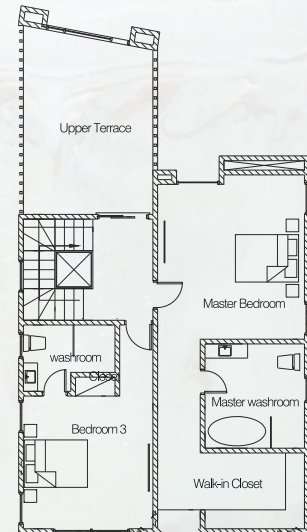
Space(s)	Area(s)
Living Area	28sqm
Kitchen & Dining Area	55sqm
Washrooms(6)	40sqm
Master Bedroom	35sqm
Family Area	25sqm
Other Bedrooms(3)	65sqm
Store & Laundry	10sqm
Balcony	25sqm
Study	10sqm
Boys Quarters	8sqm
Gross Area	330sqm



Ground Floor



First Floor



Second Floor



## THE GOLD STANDARD

Daimler's - Vyx Court makes the daily living experience prestigious.



DAIMLER  
HOMES

# BUILDING SPECIFICATIONS

## FINISHING STANDARD

Each unit within Vyx Court is completed to a premium specification, ensuring a smooth or seamless transition from development to occupancy

INTERNAL FINISH	ELECTRICAL & COMMUNICATION	MODULAR KITCHEN
a. Plaster board ceilings	a. Installed TV points in the living area and all bedrooms	a. Gloss/matte finish to all units
b. Emulsion finish walls	b. Cable & Internet connectivity	b. Integrated larder fridge / freezer
c. Porcelain floor & wall tiles	c. Contemporary switch plates and sockets	c. Tiled backsplash
d. Internal doors with fittings	d. CCTV entrance to building	d. Stainless steel kitchen sink
e. En-suite bathrooms; European standard wc, Vanity, Water heater, Mirror & Washroom accessories	e. Automated gate entry	e. Hob, Extractor, Oven, Microwave & Washing machine.
f. Air-conditioning units	f. Smoke detectors in all townhouses	
g. Recessed spotlights to all rooms	g. Fire alarm and integrated	
h. Fitted wardrobes		
i. Glazed aluminum windows		

EXTERNAL FINISH
a. Security post & security cameras
b. Electric fencing
c. Backup water supply
d. Landscaping & paved car parks
e. Swimming pool

Bespoke furnishing collections are available from 'Daimler Interior decorators', comprising of everything needed to make the property ready for your tenants to move into.

4 Bedroom Townhouse from USD28,000.00 ex VAT

# FINANCIAL HIGHLIGHTS

## PRICE & PAYMENT PLAN OPTIONS

<b>House 4</b> 240sqm	<b>House 5</b> 240sqm	<b>House 6</b> 240sqm	<b>House 7</b> 240sqm	<b>House 8</b> 240sqm
<b>\$380k</b>	<b>\$380k</b>	<b>\$380k</b>	<b>\$380k</b>	<b>\$380k</b>
		<b>House 3</b> 330sqm	<b>House 2</b> 330sqm	<b>House 1</b> 330sqm
		<b>SOLD</b>	<b>SOLD</b>	<b>SOLD</b>

STANDARD	FLEXIBLE	MORTGAGE
Reservation \$5,000 20% down payment 80% balance over 4 quarterly installments	Reservation \$5,000 30% down payment 70% proposed by buyer (must be within 18 months)	Reservation \$5,000 20% - 30% down payment 80% - 70% balance by Mortgage

# DAIMLER HOMES LTD

## THE GOLD STANDARD

We are a hallmark brand that uniquely crafts residence tailored to our clientele's innate aspiration.

## WHO WE ARE

We are a team of professionals who have extensive knowledge in real estate development and construction management. In order to have a good, long-lasting impact on the Ghanaian market, we are committed to blending old traditional processes and thorough analysis with modern, internationally acknowledged pioneering designs coupled with experienced management.

## WHAT WE DO

We are a real estate development and construction management firm with the goal of becoming the premier brand associated with premium real estate development.

We accomplish this through, managing projects efficiently to exceed our objectives,

Selecting strategically positioned lands and localities, developing global standard cutting-edge designs for numerous luxury classes, procurement collaborations with both domestic and international businesses.





# DAIMLER HOMES

For more details about our new products and services,  
kindly contact us via the details below;

Head Office,

No. 3 Bamboo St, East Legon, Accra - Ghana

+233 (0) 200 584 558

[sales@daimlerhomesgh.com](mailto:sales@daimlerhomesgh.com)

[www.daimlerhomesgh.com](http://www.daimlerhomesgh.com)

Disclaimer: The information contained within this document is a general guide. This information does not constitute an offer or a contract and we (or anyone in our company) do not imply, make or give any representation, guarantee or warranty whatsoever relating to the terms contained herein. Any intending investor must satisfy themselves as to the correctness of any of the statements, plans or images contained herein. Images are for reference purposes only.